



OD Group.

# We are ODGroup.

Our mission is to make successful space. We're your trusted partner; delivering exceptional and sustainable projects, every time.

We're an award-winning integrated design, project-management and construction company specialising in the commercial sector, catering to a diverse range of clients.

## THE GROUP AT A GLANCE

---

2004

Established

---

£135M

Turnover  
(Forecast 26/27)

---

85%

of work from  
repeat business

---

508hr

Of  
volunteering in  
2025

ODGroup is made up of three distinct yet specialist divisions that cater to the diverse needs of our clients, delivering excellence across all manner of projects and their lifecycles.

## ODInteriors.

---

### Traditional construction

Our offering is second to none and we pride ourselves on consistently delivering exceptional spaces.

Our specialist teams have a proven track record of partnering with companies across a wide range of sectors, and we work with you every step of the way to understand and deliver the perfect space for you.



## ODCreate.

---

### Design & build

A Design & Build service that creates spaces to get excited about. ODCreate works across multiple industries, and with a variety of partners to provide unrivalled turnkey solutions.

Our goal is to advance your output through forward-thinking design and construction, creating outstanding spaces for those that use them.



## ODWorks.

---

### Aftercare & Small works

ODWorks is here for your aftercare and small works needs. Our fluid way of working means we provide a bespoke and transparent service, ensuring a personal approach that not only meets, but exceeds your expectations.

Any form of works can seem daunting, and so our hands-on, agile approach allows you to evolve your office space with confidence – no stress, no fuss, we do the heavy lifting.



# Our values

## Outstanding Delivery

Taking pride in what we do.



## Integrity

Honest, practical and sustainable solutions.



## Accountability

Doing what we say we will do.



## Building Partnerships

Enjoying the journey with passion and care from everybody.

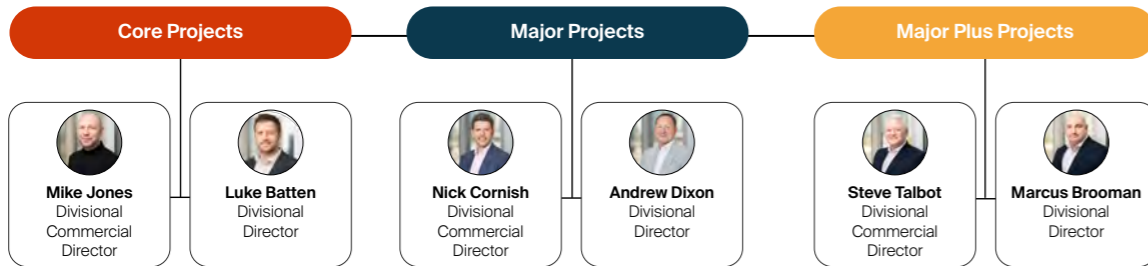


# Our company structure

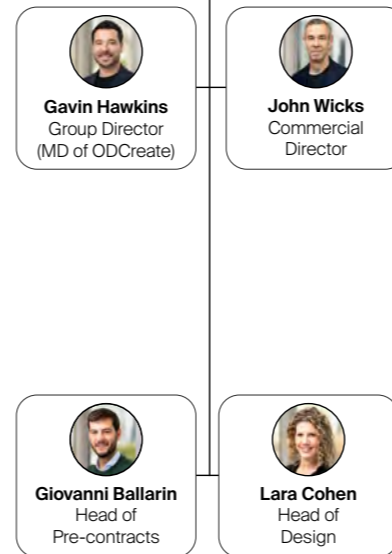
## ODGroup.



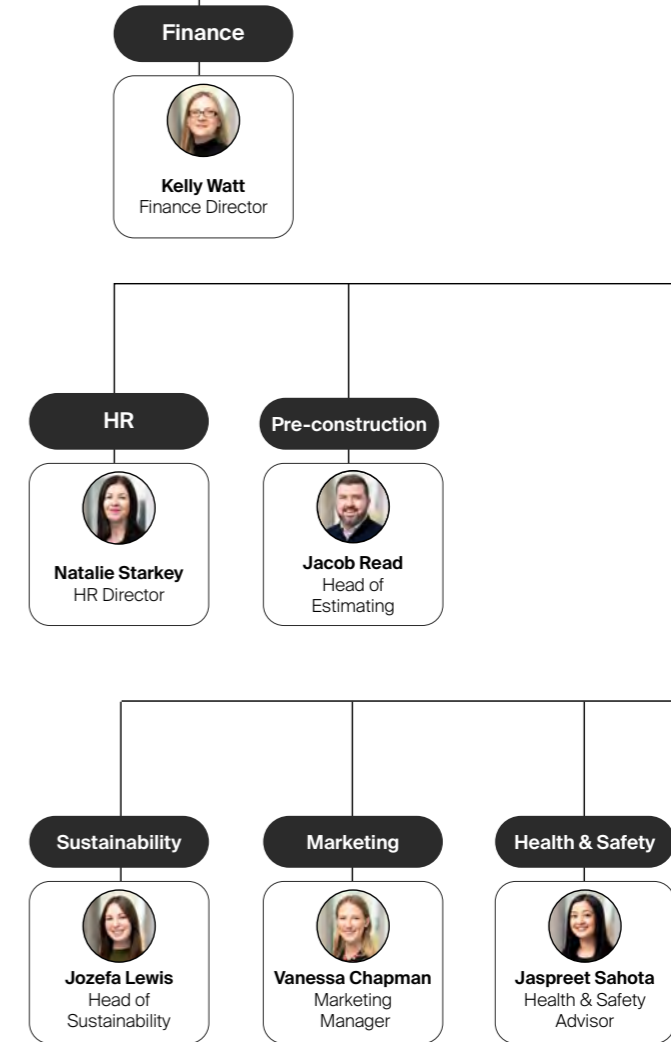
### ODInteriors.



### ODCreate.



### ODWorks.



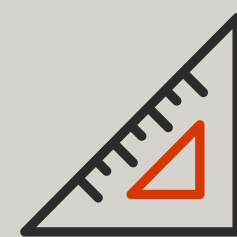


# OD Interiors.

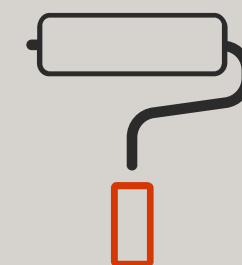
## Transforming spaces with trust.

Award-winning, and with over 20 years in the business, ODInteriors are specialists that you can rely on when it comes to delivering commercial fit-out and refurbishment projects.

### Our Services



**Office  
Fit-out**



**Office  
Refurbishment**



**CAT A &  
Landlord**



**Structural  
Refurbishment**

# OD Interiors Business Units

## Core

**£500K to £10M**

The Core division handles fast-track CAT A or B projects, offering a high-quality, client-friendly service with the goal of exceeding expectations.

Communication is crucial throughout any project and we make a point of always being on-hand, ready to help with your every need.

## Major

**£5M to £15M**

At Major, we combine expertise with experience to deliver exceptional CAT A refurbishment solutions with structural capability - we're innovative and committed to quality.

At the heart of our team is a group of dedicated professionals who care about your project as much as you do, ensuring you feel confident and informed every step of the way.

## Major +

**£10M to £30M**

We offer a personable, agile and credible service to deliver CAT A & CAT B projects, we're a team that is considered and engaging.

Working closely with you, we're here to offer first-hand support, creating an experience that aims to not only fulfil your needs but to forge a long-term relationship, instilling confidence that ODGroup will remain on-hand for any future requirements.

Our separate business units mean that we have the capability to appoint specialist teams. We're able to offer you the best in the business, experts at delivering projects of differing size, scale and value, so you can feel rest assured that you're receiving the best quality service in every possible respect.



# ODC create.

**At ODCreate we deliver innovative design and build projects. Our dedicated approach means we handle the details so you don't have to.**

As your main contractor, we'll design and construct the specified works according to your brief, delivering your vision in time and on budget.

We deliver CAT A, CAT A+, and CAT B fit-out and refurbishment projects, complete with the necessary furniture, move management, AV, and IT solutions.

# Why Choose ODCreate?

**We care about your project as much as you do, we're committed from the outset – nothing is too much trouble.**



**We provide a service like no other.**

We're ambitious – driven to deliver uncompromising quality, and outstanding design, and we do.



**We're communicative and responsive.**

We're passionate about people, and so you can expect a responsive, accommodating, and adaptable service dedicated to making your project as stress-free as possible.



**We don't cut corners.**

An ethos that is integral to our way of working. We pride ourselves on being a detail-oriented team, combine that with our shared expertise, and we have the key to unlocking outstanding spaces.

---

“We were pleased with the result of the works and had a very positive experience with the project team. The project was delivered without delay in the agreed timeframe.”



Anaëlle Dindorf, Asset Manager at KGAL  
Investment Management GmbH & Co KG.

---



# ODWorks.

## **We tailor space.**

ODWorks is here for your aftercare and small works needs. Our fluid way of working means we provide a bespoke and transparent service, ensuring a personal approach that not only meets, but exceeds your expectations.

Any form of works can seem daunting, and so our hands-on, agile approach allows you to evolve your office space with confidence – no stress, no fuss, we do the heavy lifting.

## **Small works**

For office fit-outs of around £500K, our small works solution provides an end-to-end service that fits your budget and time frame.

## **Aftercare**

If your office space isn't quite working and you need to make some adjustments, whether a small change, or a larger refurbishment, we've got you covered.

# We created successful space for



LONDON

# Global Relay

**Location**

45 Cannon Street, London

**Size**

25,000 sq ft

**Value**

£5,200,000

**Duration**

17 weeks



# Global Relay

Global Relay are a leading IT and technology services client providing collaboration, archiving, analysis, messaging and security solutions.

ODCreate delivered the high end Cat B fit out of the 5th, 6th and 7th floors on a full turnkey Design & Build solution.

The focus for Global Relay is around creating an exceptional space using the 'best of the best' in terms of fit and finish. Working with our tier one supply chain to design and deliver the very best, an emphasis on the careful management and coordination of all materials and trades ensured an exceptional product at Practical Completion.

Quality goals were communicated to all parties as part of our quality plan. Samples, mock-ups and benchmarking were used for every element to ensure Global Relay and Lorencs vision and quality aspirations were met.

## Project Deliverables

- Comms room
- Tea points and catering facilities
- Broadcast studio
- Auditorium (60 person capacity)
- Client lounge
- Meeting rooms and boardroom
- Open plan and cellularised office space
- Spiral glazed partitions and curved glass
- Bespoke high end joinery
- Raised access flooring
- Terrace
- M&E modifications
- Extensive IT/AV package
- Furniture (provided by pOd) including installation and furniture

<b>Architect</b>	ODCreate & Lorenc Design Associates
<b>Project Manager</b>	BNP Paribas



LONDON

# London Stock Exchange Group

**Location**

Level 1, 5 & 7, Paternoster Square,  
London

**Size**

40,000 sq ft

**Value**

£6,200,000

**Duration**

20 weeks



LONDON

# London Stock Exchange Group

The office fit-out comprised of meeting rooms and offices, an open plan area, collaborative and breakout spaces, staff kitchen, catering pantry, comms room and roof terrace. The shower refurbishment of the lower ground floor comprised of demolition works to the existing facilities, construction of new and expanded male and female showers and changing facilities, plus an accessible facility.

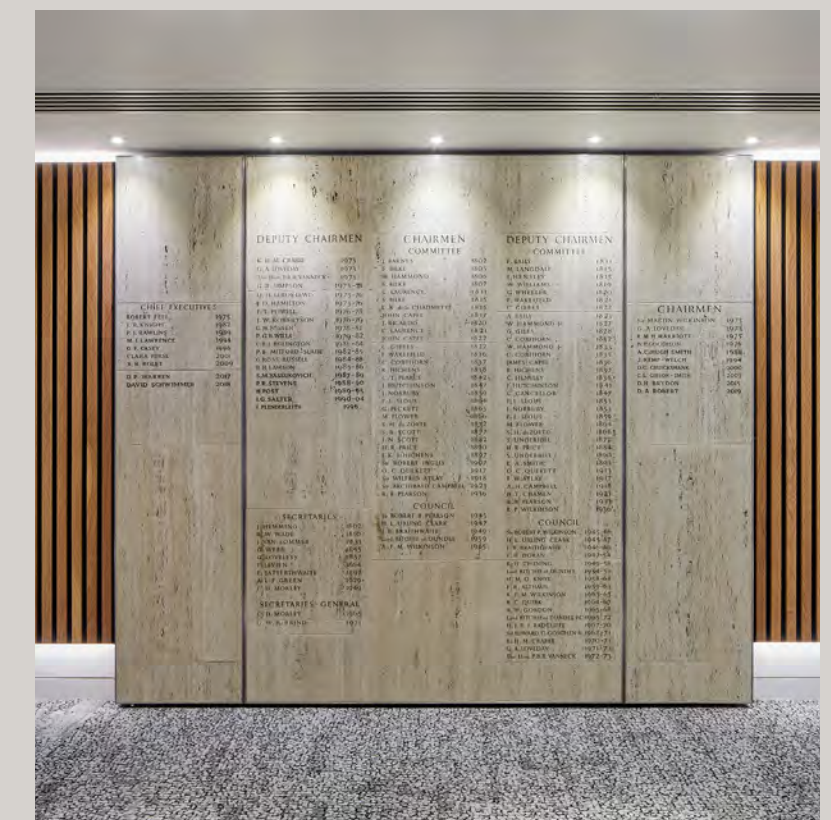
Developing our methodology and logistics to be considerate of the building users and create a 'business-as-usual' environment was crucial due to the sensitive nature of the building and live environment.

The Cat-B office fit-out comprised meeting rooms, offices, an open plan areas, collaborative and breakout spaces, teapoints and a faith room.

## Project Deliverables

- High end Cat B fit out across 3 floors
- Reception
- Meeting/ Training rooms
- Boardroom
- Café
- Collaboration zone
- Open plan office space
- 24 hour contact centre
- Video conferencing room

<b>Architect</b>	Scott Brownrigg
<b>Project Manager</b>	Arcadis
<b>Quantity Surveyor</b>	Ammonite Surveying
<b>M&amp;E Services</b>	MEIT



LONDON

# Dorchester Collection

**Location**

One Knightsbridge, London

**Size**

27,000 sq ft

**Value**

£3,700,000

**Duration**

16 weeks



# Dorchester Collection

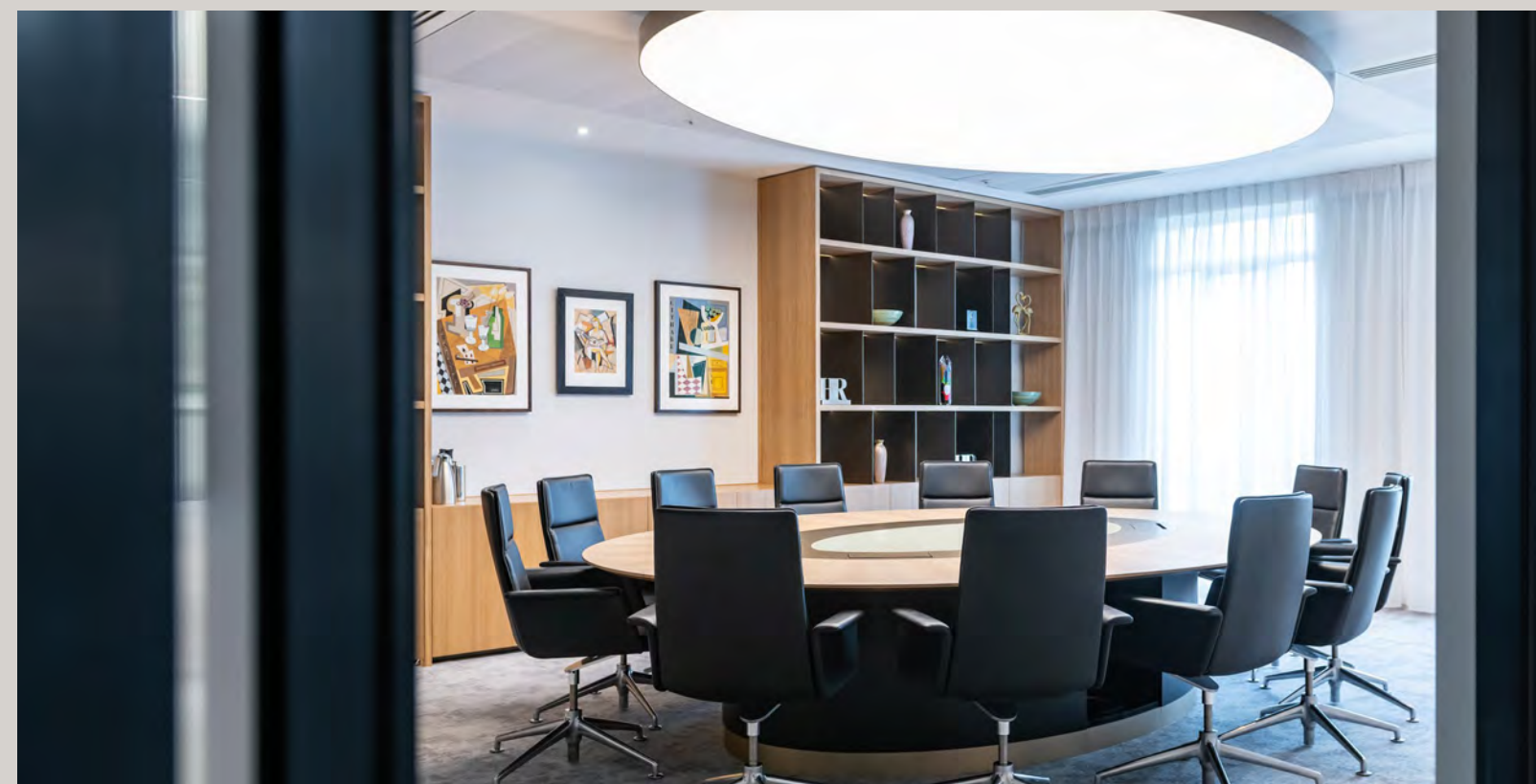
Dorchester Collection is a unique collection of nine iconic hotels and addresses across the world.

ODInteriors successfully assisted The Dorchester Group in moving to their new office space in 1 Knightsbridge, London. ODInteriors delivered a Cat B fit out for the client to the upper ground and third floors of the building.

A hidden tea point was introduced to the upper ground floor, allowing the client to entertain guests while maintaining the privacy of their breakout areas. Meeting room space was optimised on the upper ground floor with the introduction of a bi-folding wall, creating separation in the existing meeting space.

## Project Deliverables

- New, private tea point
- Bespoke joinery
- Kvadrat acoustic panelling
- New flooring
- Partitions
- Feature ceilings and walls



<b>Architect</b>	MF Studio
<b>Project Manager</b>	JAC
<b>Quantity Surveyor</b>	Fanshawe
<b>M&amp;E Services</b>	EnergyLab

LONDON

**Intuit**

**Location**  
Victoria, London

**Size**  
35,000 sq ft

**Value**  
£4,000,000

**Duration**  
19 weeks



**ODInteriors. Core**

# Intuit

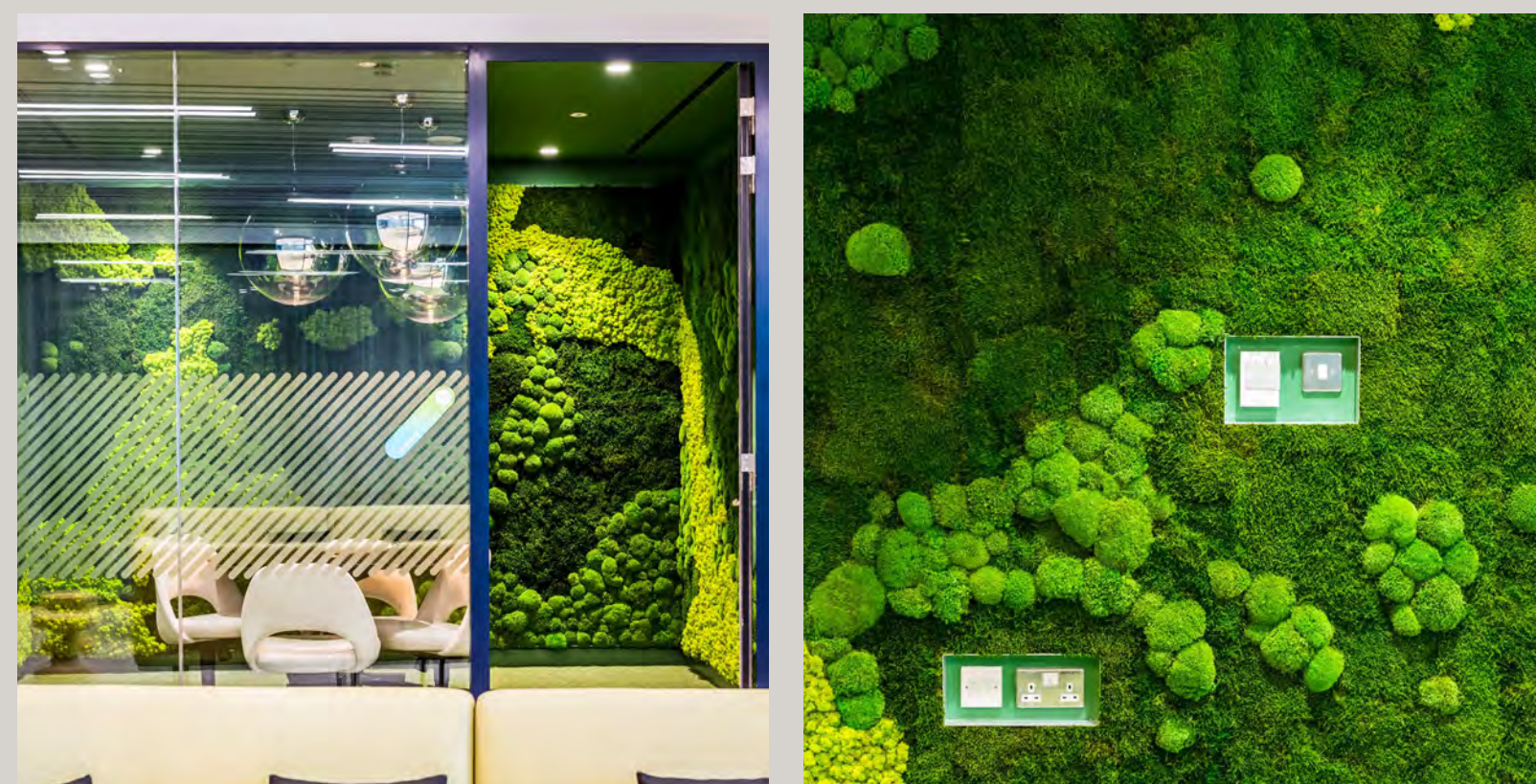
Intuit is one of the world's leading providers and developers of Accountancy, Tax Management and Personal Money Management software systems and Mobile Applications. Due to the growth of their business, Intuit were looking to move into a new space in the prestigious Cardinal Place (Land Securities building) located in Victoria.

ODInteriors carried out the work on this prestigious project to deliver a new, landmark scheme that follows the Intuit global brand guidelines, whilst also capturing the culture and essence of London.

## Project Deliverables

- Techknow (genius) bar
- Pantry games room
- Reception and arrival area
- Tea points and catering facilities
- Meeting rooms and boardroom
- Open plan and cellularised office spaces
- Acoustic glazed and drywall partitions
- Bespoke high end joinery
- Raised access flooring
- Specialist ceilings and exposed services
- M&E modifications & extensive IT/AV package
- Furniture (provided by pOd) including installation

<b>Architect</b>	Gensler
<b>Project Manager</b>	JLL
<b>Quantity Surveyor</b>	JLL
<b>M&amp;E Services</b>	Long & Partners



LONDON

# First State Investments

**Location**  
Finsbury Circus, London

**Size**  
25,000 sq ft

**Value**  
£3,400,000

**Duration**  
13 weeks



LONDON

# First State Investments

First State Investments is the investment management business of the Commonwealth Bank of Australia. They were seeking a partner that could deliver a two stage Design & Build CAT A to CAT B fit-out of the 7th and 8th floors.

ODInteriors delivered the high-end fit-out as a two stage Design & Build solution.

## Project Deliverables

- New client meeting suite
- Data centre
- Catering kitchen
- New toilets
- Trading areas
- Reception and collaboration hub area
- Library
- Full AV installation integrated into existing services



<b>Architect</b>	Gensler
<b>Project Manager</b>	Mace
<b>Quantity Surveyor</b>	Mace
<b>M&amp;E Services</b>	Hoare Lea

LONDON

# Phaidon International

**Location**  
City of London

**Size**  
42,000 sq ft

**Value**  
£4,800,000

**Duration**  
20 weeks



# Phaidon International

We are currently delivering a full interior, Cat B fit-out to create a brand-aligned, collaborative workplace for Phaidon International at CityPoint Tower. The design reflects Phaidon's global identity while enhancing flexibility, wellbeing and productivity across the floorplate.

Our scope includes the installation of open-plan workspaces, quiet zones, breakout areas and meeting suites, all carefully orchestrated and arranged to maximise upon the natural light and views from which the space benefits.

High-quality finishes and materials have been selected to ensure both durability and visual impact across the space, culminating in a user experience that will draw individuals to the space time and time again. Far from any ordinary workspace, that which we are creating here on behalf of Phaidon is a destination that far transcends the traditional confines of the corporate office.

## Project Deliverables

- Full CAT B fit-out
- Destination workspace composed of diverse interior typologies to facilitate focus work, collaboration, corporate events and entertainment.
- Brand driven design
- Full AV installation integrated into existing services

<b>Architect</b>	ODGroup
<b>Project Manager</b>	Savills
<b>Quantity Surveyor</b>	CHP



# ESG strategy

We're invested in delivering our ESG Strategy to remain accountable to our environmental and social impact targets.



**Jozefa Lewis**  
Head of Sustainability



**Pooja Vijay**  
Senior Sustainability Advisor



**Mia Cherry**  
Social Value Advisor



**Oscar Leigh-Hales**  
Sustainability Advisor

What we can work towards:



# Approach to ESG

As a business, we continually collect data that enables us to set informed targets and goals across our office, sites, and projects.

We're constantly working to employ sustainable practices that generate positive environmental and social impacts from our activities.

And with this, we have published the ODGroup ESG Strategy – defined by five key pillars that reflect environmental, social, and governance practices that we strive to adhere to.



01  
Carbon footprint



02  
Waste & resource efficiency



03  
Environmental management



04  
Sustainable procurement



05  
Social impact



# At ODGroup, we're committed to creating more than just successful space —we're building opportunities, inclusion and a lasting impact.

Our social value strategy is embedded across the business, championing diversity, wellbeing, education, and community engagement.

From inclusivity and mental health support to career pathways and outreach programmes, we invest in people and the future of our industry.

### **Our people**

We conduct yearly DE&I audits, reviewing our diversity statistics, demographics, and employee retention data. This informs our strategy, policies, processes, recruitment methods and workplace culture.

### **Developing awareness**

We're committed to developing awareness surrounding DE&I. We offer training, lunch and learns, and opportunities to address personal issues that may be close to our colleagues' hearts.

### **Construction careers information, advice & guidance events**

We engage with schools and universities to deliver inspiring career sessions, encouraging students to explore construction-related degrees.

### **Wellbeing of workforce**

Construction often brings high-pressure situations, which is why ODInteriors has developed a mental health plan to promote wellbeing and encourage open conversations.

We appoint self-nominated Mental Health Champions to help reduce the stigma around mental health and support colleagues with a wide range of issues.

# Considerate Constructors Scheme

· Our internal CCS champion works with our site team to continuously ensure we are respecting the local community, caring for the environment and valuing our workforce.





[www.od-group.com](http://www.od-group.com)

**Get in touch to discuss your next project:**

020 7562 7800 or [hello@od-group.com](mailto:hello@od-group.com)

8th Floor  
24 Chiswell Street  
London  
EC1Y 4TY