



Trend Report

**From the studio: The five trends that are
shaping commercial interior design.**

ODCreate.

Trend 1
The inclusive shift

Universal design: Bridging the gap between aesthetics and inclusivity.



Today's office plays a key role in attracting and retaining talent. More than ever, candidates weigh up the look, feel, and atmosphere of a workplace when choosing where to work.



But it's not just about aesthetics – the true differentiator is how we bridge the gap between great design and a truly inclusive and universal space.

That starts with understanding your people: creating environments that support strengths, adapt to needs, and uplift daily experiences.

Accessibility is essential. Clear wayfinding, ergonomic furniture, and access to quiet, purposeful spaces, whether for prayer, parenting, or decompression, should be standard in any inclusive workspace.

Zoning by task matters too. Buzzing, collaborative areas energise some, while quiet, low-stimulation zones support deep focus and neurodiverse needs. This flexibility enhances the experience for all.

Design details make a big impact. Thoughtful colour palettes can ease anxiety, aid concentration, and support those with visual or sensory sensitivities. Likewise, tuneable lighting and circadian-friendly systems have been shown to improve mood, energy, and productivity.

When inclusivity guides design, it creates more than just functional offices, it shapes spaces where people feel connected, supported, and empowered.

And the bonus? Inclusive design naturally brings warmth, depth, and personality to a space, turning it from just another office into a truly engaging workspace.

Ultimately, designing with neurodiversity in mind doesn't just soften the



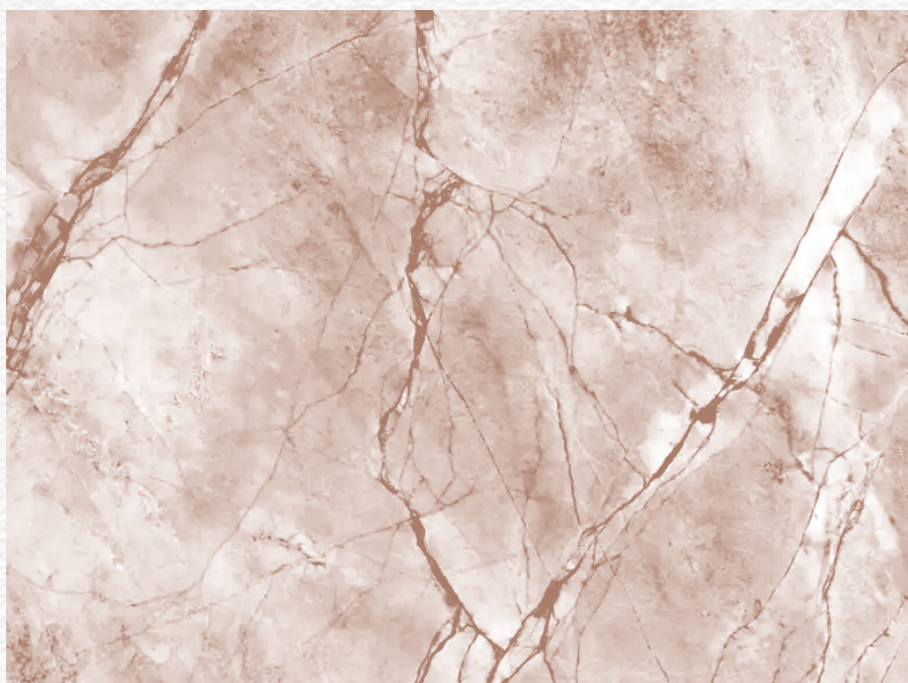
aesthetic, it shapes culture. It champions a more relaxed, human-centred experience that puts employee wellbeing, satisfaction, and performance at the core of workplace design.

Elements of warmth and individuality.

Trend 2

Material revolution

Reimagining substance: Sustainable, stylish, smart.



Timeless design is getting a modern rethink. We're seeing a wave of fresh takes on classic materials – ones that are kinder to the planet and the purse strings.

As sustainability becomes a key driver in design, particularly with the implementation of new EU regulations and the focus on a circular economy, we're seeing a growing appetite for recycled plastics, textiles, and construction waste to create new products.

Take terrazzo, for example. Originating in 16th-century Italy as a clever way to reuse stone offcuts, it's far from new. But now, this old favourite is undergoing a makeover.

Today, companies like Foresso are reimagining

terrazzo by swapping out stone for timber offcuts. The result? An upcycled surface that captures the signature terrazzo aesthetic while using 100% reclaimed wood – delivering warmth, texture, and a closed-loop, circular solution.

Not only is this approach environmentally conscious, but it also creates a hard-wearing, cost-effective alternative to traditional stone – perfect for busy, high-traffic workplace environments.

And the innovation doesn't stop there. Realistic marble and stone alternatives that pair visual elegance with practical performance are becoming ever the more popular.



Biodegradable materials are helping to redefine what premium really means.

Brands like Versital are leading the charge, crafting marble-look surfaces from 100% recycled rPET resin. These options offer the same stain resistance, durability, and low maintenance at a lower cost and with a lighter environmental footprint.

Recycled and reclaimed materials are helping to redefine what future-proofed really means. They bring texture, tone, and storytelling into the workplace – proving that smart, sustainable design doesn't have to sacrifice style.



A fresh take on classic materials.

Trend 3
**Colour
with clout**

**Organic tones meet bold accents:
The palette of a modern office.**



Creating stylish workspaces that feel alive.

2025 is the year of Mocha Mousse – a comforting Pantone pick that has made its way into homes and offices alike and with it comes a palette of warmth, nature, and sophistication.

Stemming from the calming hue of mocha, we're seeing a resurgence of timeless, earthy tones injected with rich shades in workplace design. And for the foreseeable, these hues are being punctuated with brighter, bolder accents.

Warm beiges, terracotta, and rich browns bring a cozy, contemporary, home-from-home feel that more employers are eager to integrate. All with an aim to create a welcoming atmosphere that draws employees in.

Jewel tones such as emerald, ruby, and sapphire are among the rich shades we're embracing, adding a depth and vibrancy to design that can set an office apart.

To balance those grounded tones, we're seeing a confident return of brighter accents – punchy pinks, playful purples and metallic undertones— particularly through artwork, soft furnishings, and finer details. Used thoughtfully, they inject energy and personality without overwhelming the space.

Whether it's through warm, natural tones that support human-centred design, or accent colours that bring

vitality and contrast, used in harmony they create stylish workspaces that feel alive, yet grounded, and inspiring while maintaining that essential polish and professionalism.

And ultimately...
They just look great.



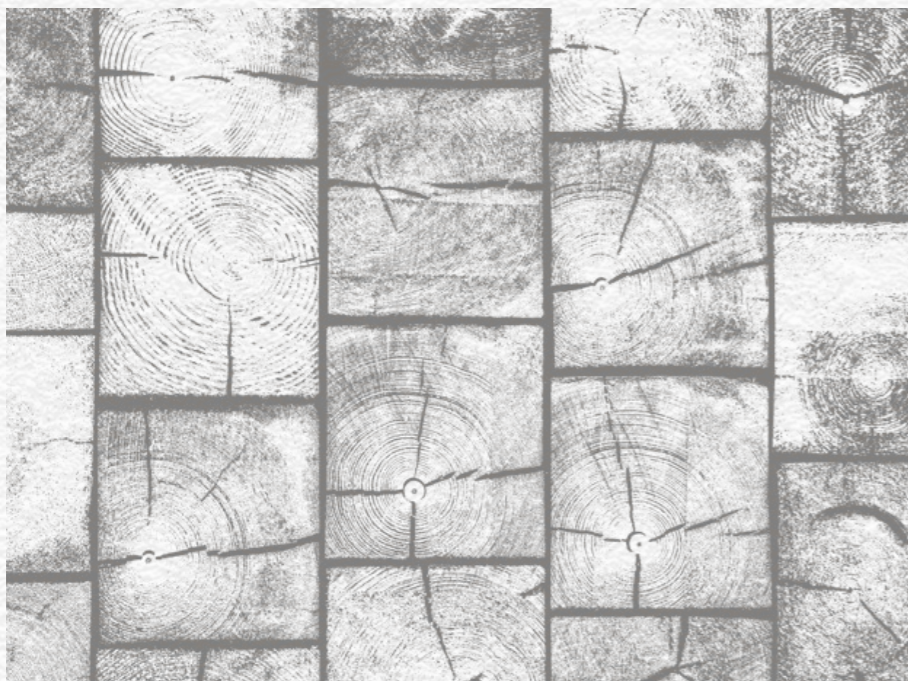
**Elevating a
workspace's
identity through
colour zoning to
add visual interest.**



Trend 4

Nature at work

Bringing the outdoors in: How naturality is returning to the workplace.



• • • **The great outdoors is making itself comfortable indoors — and the workplace is next.**

Natural textures are on the rise, with more clients seeking earthy and tactile finishes that soften the sharp edges of commercial design.

Expect continued demand for organic materials: polished plaster, concrete, recycled timber panelling, cork, limestone and clay. These finishes bring not only a refined aesthetic, but also depth and visual intrigue.

Flooring is evolving too. Bamboo and cork are quietly reshaping choices in contemporary offices, prized for their sustainability, durability, and distinctive look. Bamboo, a fast-growing

renewable, rivals hardwood in strength but offers a warm, clean-lined finish. Cork, harvested from oak bark, adds natural cushioning, ideal for areas with heavy footfall. Its acoustic and thermal properties also contribute to quieter, more efficient workplaces.

And for projects where budget is key? Paints that mimic raw finishes are gaining popularity. Brands like Bauwerk Colour are leading the way, offering sustainable, vegan paints that channel naturality in both ingredients and aesthetic — proof that you don't need stone walls to create a grounded space.

Whether real or reimagined,

natural finishes offer more than just style. Their muted tones and organic textures foster calm, welcoming environments, something every workplace could benefit from.

After all, if a little slice of nature can help us feel better and work smarter... why not let it move in?

Natural finishes do more than look good...



Trend 5
**Utilitarian
chic**

**Form follows function: Clean lines,
clear minds.**



**There's something
to be said for the
Scandi way —
minimal, practical,
and streamlined
with purpose.**

But now, that philosophy is evolving into something bolder: modern utilitarianism. It's a style where function leads and form follows. Objects exist to be used — their design is born from necessity, not embellishment.

Superfluous details? Redundant. Furniture and tools? Uncomplicated, restrained, and pragmatic. And because of that, effortlessly chic.

At its core, this aesthetic champions clean, open spaces. In the workplace, it's about designing schemes free from excess and visual noise — decluttering the space and the mind.

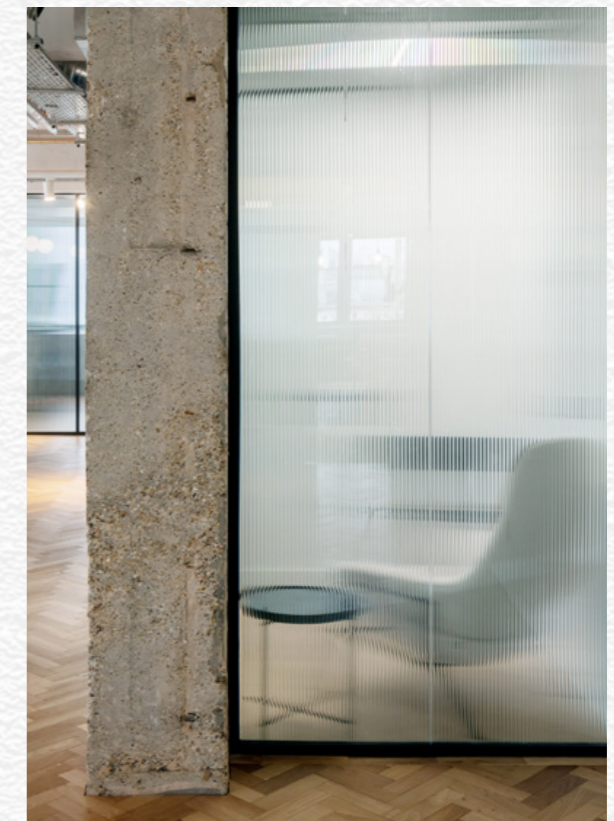
There's a growing demand for multi-functional furniture, smart storage, and designs that work as hard as the people using them, especially in the era of hybrid-working.



The beauty of utilitarian chic is that it naturally aligns with sustainability. Stripped-back visuals often make space for reclaimed materials, low-impact finishes, and technologies that reduce carbon without sacrificing durability.

Exposed structures, clean lines, geometric forms, and a neutral palette come together to create a cohesive, harmonious environment.

Complexity is left at the door. What's left is industrial cool with purpose at its core — ticking all the boxes for clients who want substance with style. It's honest design — simple, functional, and built to last.



*Showcasing raw structures,
emphasising geometric forms.*

ODCreate.

8TH FLOOR, 24 CHISWELL STREET, LONDON EC1Y 4TY

WWW.OD-GROUP.COM